

The Group. Internatio-Müller N.V. is a public company and as such one of the larger in the Netherlands quoted on the Amsterdam Stock Exchange.

The issued capital amounts to Dfl. 75,734,000 (nearly US\$ 35 million). The annual turnover is in excess of Dfl. 3,000,000,000 (about US\$ 1,150 million).

The group employs approximately 13,800 people of which 11,600 in the Netherlands and 2,200 abroad.

The Central Office of the Internatio-Müller Group is domiciled at 1, Westerlaan, Rotterdam, the Netherlands.

The Board of Management, the Managing Directors of the Divisions and the central staff providing functional and specialized services are located at this address.

The Internatio-Müller Group consists of a number of operating companies, each working under its own style. An optimum identification with customers and suppliers is thus ensured.

The Board of Management of the Group determines the general policy and has the overall responsibility for the corporation.

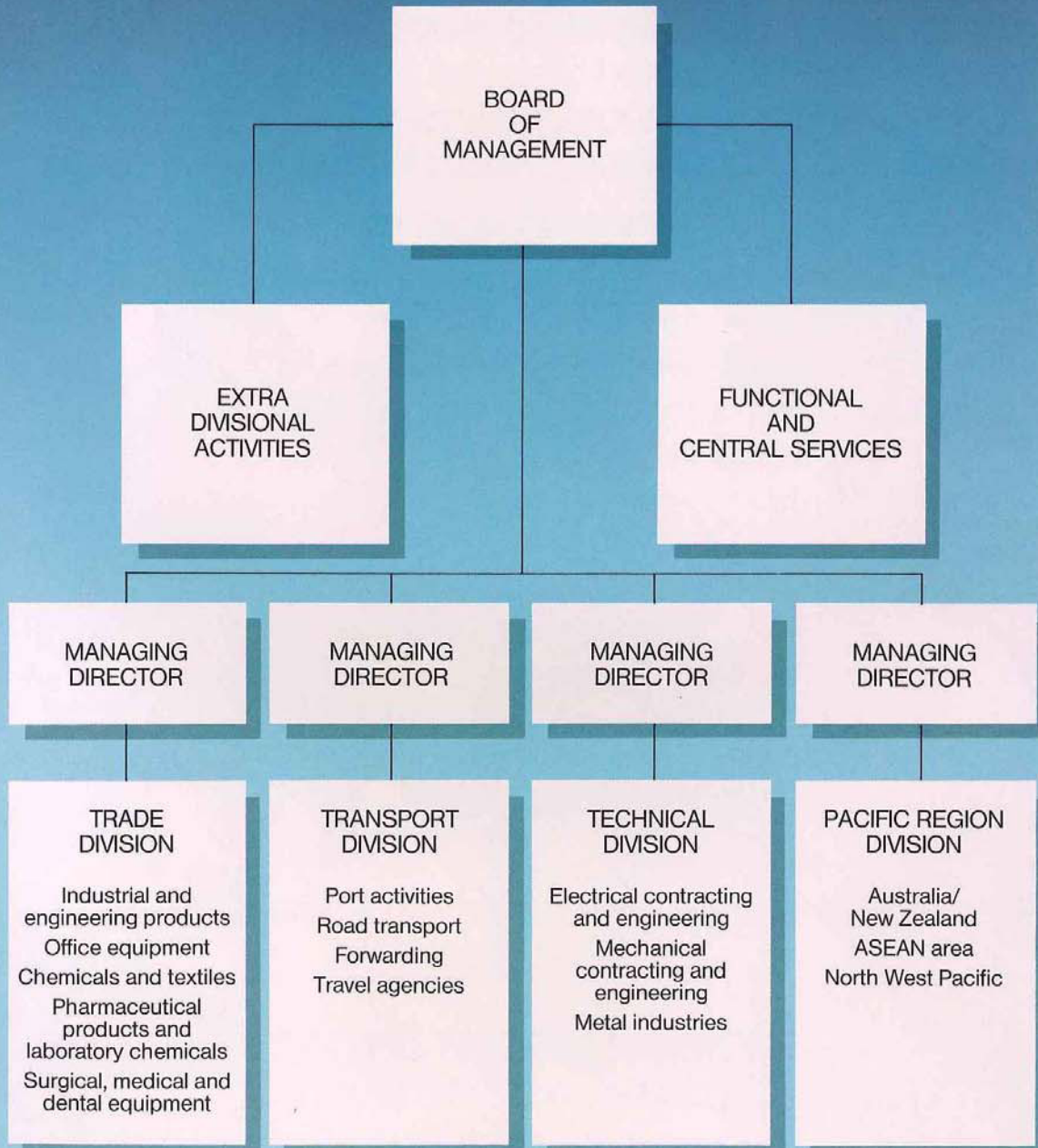
The Managing Directors of the Divisions control the execution of this policy and supervise the management of the companies on the divisional level.

The Managing Directors of the operating companies have clearly defined powers delegated to them and on that basis they have corresponding responsibilities.

Organization

INTERNATIO-MÜLLER N.V. ROTTERDAM

Central Office of the Group, Address: 1, Westerlaan, 3016 CK Rotterdam, P.O.B. 567, 3000 AN Rotterdam, The Netherlands; telephone: (010) 36 01 00; telex: 27088 intmu nl; cable-address: central board.



ASEAN Countries

COSTRACO PRIVATE LTD., SINGAPORE

(73% participation)

Import and distribution of sawmills, woodworking machinery, sawblades and a complete range of supplies for the timber industry in the Asean region; export of logs, sawn timber and timber products.

managing director: A. Faber;

directors: I.C. Buchanan, C.B. van Ekris;

address: Chow House, 140-142, Robinson Road, Singapore 1; telephone: singapore 222-5055 (10 lines); telex: singapore RS 21709 (a/b costra); cable-address: Costraco Singapore; associated companies/branches in: Hong Kong, Kuala Lumpur, Kuching, Kota Kinabalu, Manila, Jakarta, Medan, Surabaya, Semarang, Banjarmasin, Samarinda

BRY-CHEM PTE LTD., SINGAPORE

Import and distribution of chemicals and allied raw materials.

manager: H.K.I. Liem;

address: Chow House, 140-142, Robinson Road, Singapore 1; telephone: 222-5055; telex: RS 21709; cables: Brychemco

I-M SINGAPORE PTE. LTD., SINGAPORE

Importers and distributors of engineering products; agro-chemicals.

Engineers/contractors of installations for airports, water treatment plants.

managing director: W. Irik

address: Suite 906, 10th Storey, Jalan Sultan Centre, 50 Jalan Sultan, Singapore 0719; telephone: 295-3227; telex: RS 33478

I-M (THAILAND) LTD., BANGKOK

Representation of Internatio-Müller interests in Thailand; manufacturers representatives; engineering and other projects.

managing director: J.J. Boeles

address: 94, Shinawatra bldg, 3rd floor, Soi 23 prasarnmitr, Sukhumvit Road, Bangkok, P.O.B. Central 1547, Thailand. telephone: 3913813, 3912424, 3911153; telex: 87378 th

1-2 Singapore
3 Bangkok

